

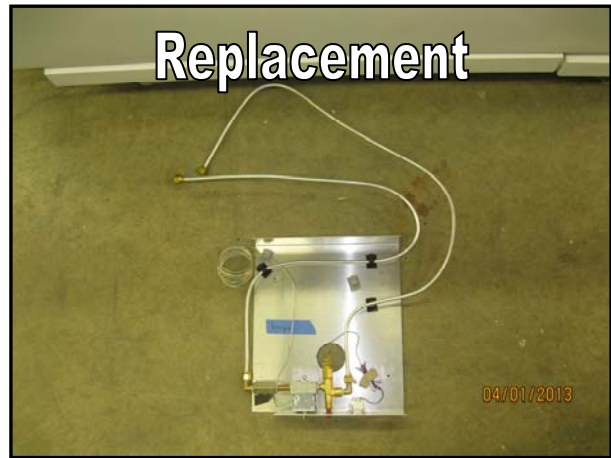
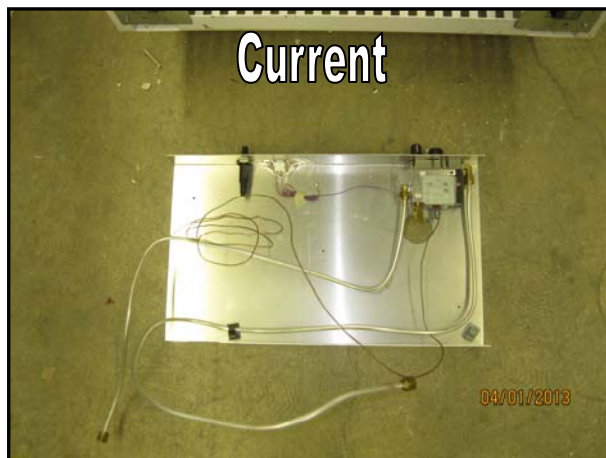
Installation Instructions

CSA Certified Conversion Kit for UGP 15/18 SM/CM For Standard Models(SM) and Carbon Monoxide Detector Models (CM)

Part# UGP1518-CBPUB06ConversionKit-1

The thermostat gas control conversion kit is a CSA approved conversion to change out the older gas control train assembly to the new certified assembly.

This kit includes all required components and instructions to make this conversion on the UGP15/18 SM/CM model.



Parts contained in the conversion kit are:

- Instructions for replacement – French and English
- New lighting instruction sticker - – French and English
- Parts Guides – UGP15/18 SM/CM/DV – English and French
- All components required for new Gas Train assembly
- Tube of Red High Temp Silicone (for Direct Vent units)



Conversion Process

This conversion should be performed by a licensed gas fitter

The following is a step by step review of how to complete the conversion – see corresponding images.

Removal of older thermostat assembly

1. Shut the gas supply off to your appliance before disconnecting gas line at inlet connection of fridge (not shown in corresponding images)
2. Disconnect inlet connection (not shown in corresponding images)
3. While fridge is standing upwards open the fridge door
4. Pull out top shelf, locate the capillary tube on the evaporator fins
5. Remove the putty (if there) and unclip capillary tube from fins, straighten out the capillary tube



6. Now move around to the back of the appliance where the capillary tube enters from the back, locate the putty (if there) holding in the capillary tube in place and remove the putty



7. Pull the capillary tube out from the back of the fridge
8. To allow better access to remove burner components, lay the fridge down on its face; make sure you have adequate padding so you don't scratch the fridge doors. (You may have to empty your fridge first before doing this)



9. Remove the burner box cover, consisting of 1 screw



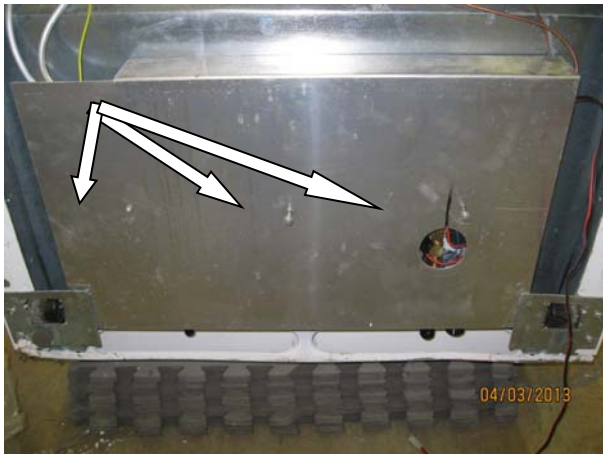
10. Disconnect the gas outlet tube from the orifice ensuring to use a back up wrench as shown



11. Disconnect the gas inlet line from the back of the inlet fitting; ensure to use a back up wrench



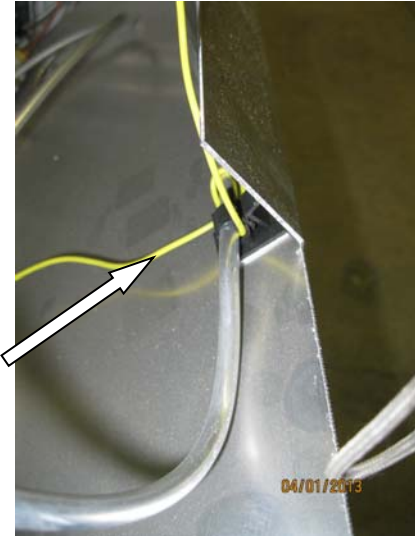
12. Remove the mounting screws that secure the plate assembly from the bottom of the appliance



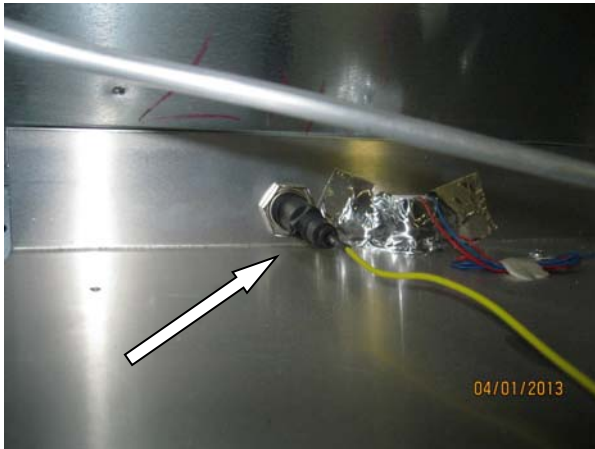
13. Pull the plate down slightly, this will allow you to get at a few more items so the assembly can be removed completely from the fridge



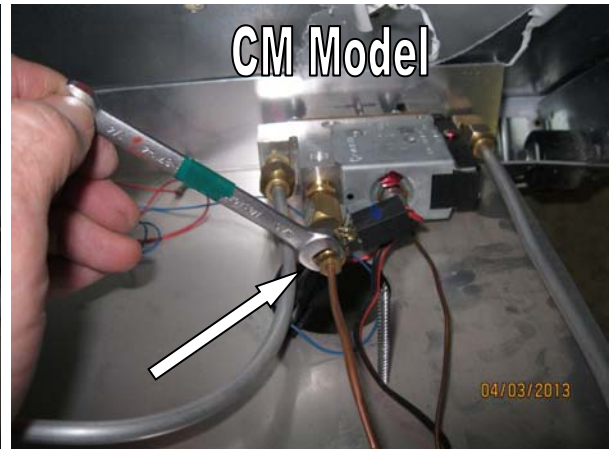
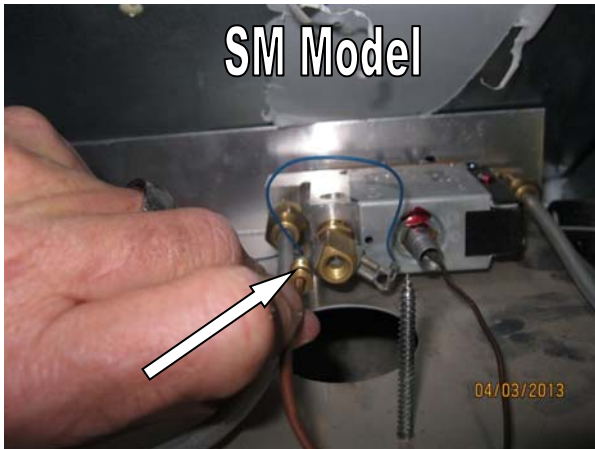
14. Unhook the piezo wire from the clip that may be holding it in place to the bottom of the plate



15. Pull the piezo wire off the back side of the piezo



16. Remove the thermocouple from the backside of the interrupter body.



17. The plate can be pulled away from the fridge and placed on the floor

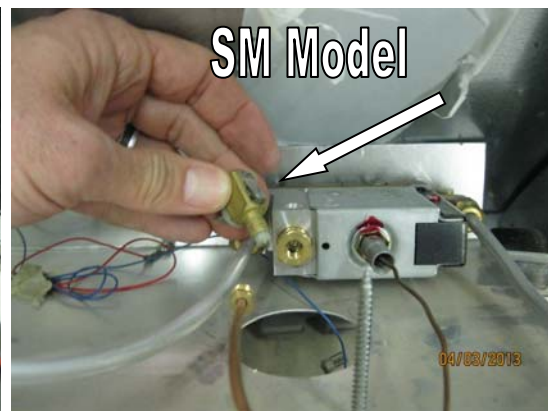
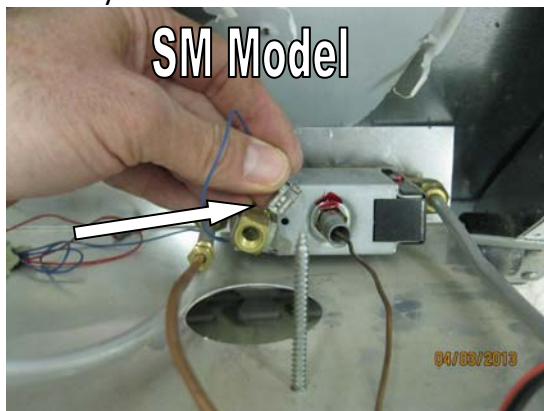


18. We now need to remove a few components from the old assembly to be used on the new assembly

19. Remove the nut from the back of the piezo, remove piezo and retain both to also be used on new assembly



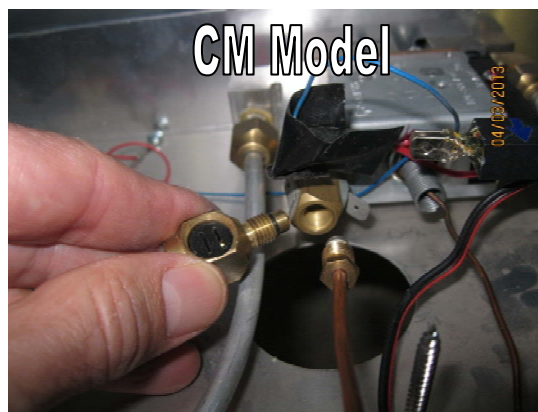
20. Unhook the blue wire from the interrupter block and remove the block to be used on the new assembly – **SM Model**



21. Remove the black tape and unhook the blue wire from the interrupter blocks red wire lead and remove the block to be used on the new assembly – **CM Model**



22. Pull out the mosfet from the interrupter body and then unscrew interrupter body from back of gas valve (in some cases there is a single prong interrupter body between the gas valve and the interrupter body you are removing, that's not being used) - **CM Model**



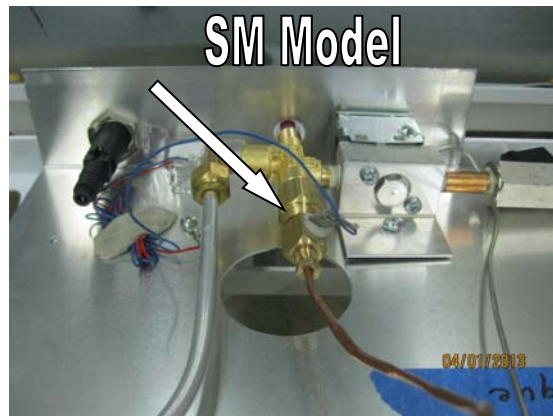
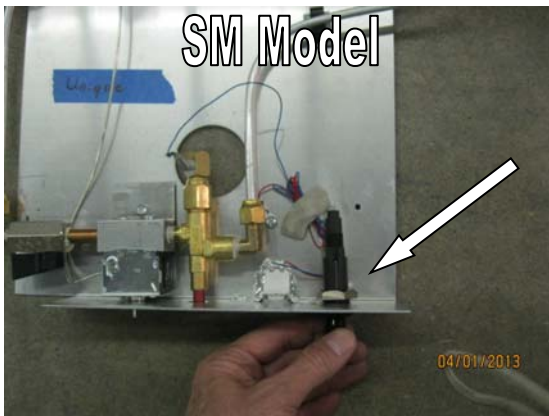
23. Disassembly now completed

Assembly of Conversion Kit

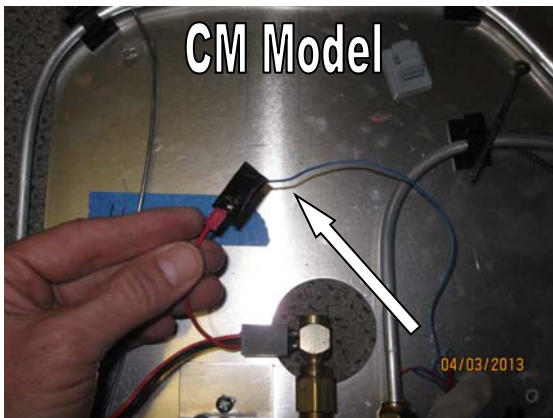
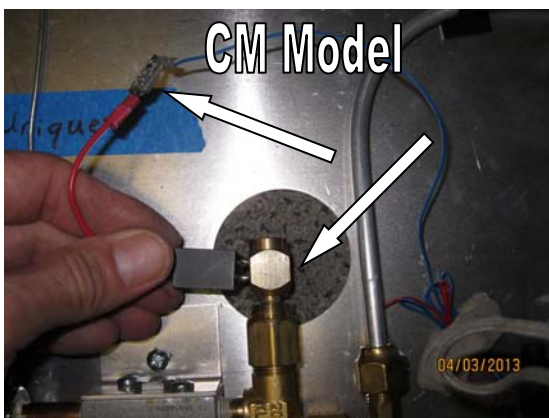
1. Place the new gas train assembly on the floor



2. Attach the piezo and nut to the new plate and assemble the interrupter body into the back of the safety valve ensuring that you reattach the blue wire from the flame indicator to the spade on the block - **SM Model**



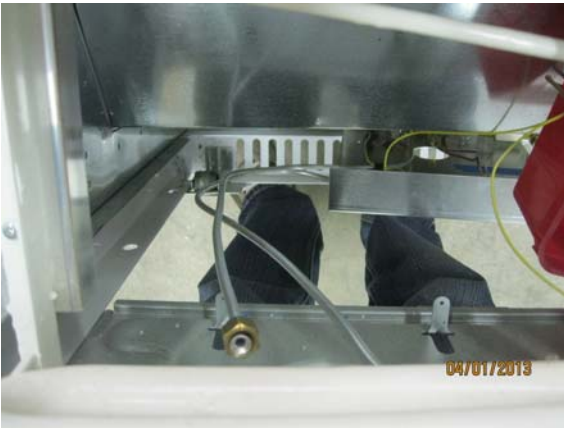
3. For the **CM Model** assemble the interrupter body into the back of the safety valve ensuring that you reattach the blue wire from the flame indicator to the red wire lead of the Mosfet. Tape up with electrical tape so it does not ground out against the plate when reassembled



4. Re attach and tighten the thermocouple into the interrupter body – **CM Model**



5. Re attach the peizo wire to the back of the piezo
6. Re attach the inlet gas tube to the back side of the inlet connection

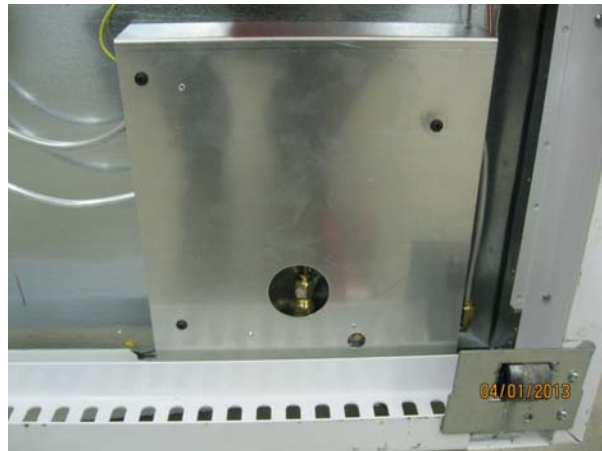
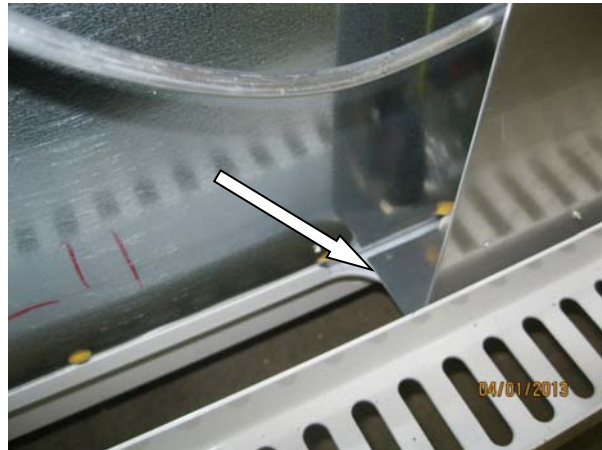


7. Reattach the outlet line to the orifice
8. Tighten each connection with a back up wrench



UNIQUE®

9. Fasten the gas assembly plate to the bottom of the fridge with the screws you retained using the mounting holes that are provided in the plate. You can position the plate downwards against the backside/front part of the fridge, this way the controls will be accessed easier once stood up. **You may have to set it back a bit for the UGP18 model due to the grill insert**



10. Before we stand the fridge up, locate the capillary, unravel and run up the side of the fridge to where the hole is located for entry to the into the cabinet
11. Straighten out capillary tube and run it into the interior of the fridge.



12. Stand the fridge upright

13. Once it reaches the inside of the fridge ensure there is enough length to reach the evaporator fins. **NOTE:** *Be careful not to kink the capillary tube in the process otherwise it could break and render the control "non functional". If you have trouble getting the capillary tube back through, don't force it, you may have to re-drill the hole from the inside through to the back which will remove any debris that may be blocking the path.*
14. Attach the capillary tube to evaporator fins using clip



15. Apply revised lighting instruction sticker to inside overtop existing label
16. ***We now want to start up the appliance and ensure there are no gas leaks at all of the connections you made during the conversion process. (Inlet line connection x 1, outlet line connections x 1).***



17. Once leak testing is complete you can replace the burner cover – You have now completed the conversion



Reminder: Ensure you have gas leak tested all connections before operating your appliance.